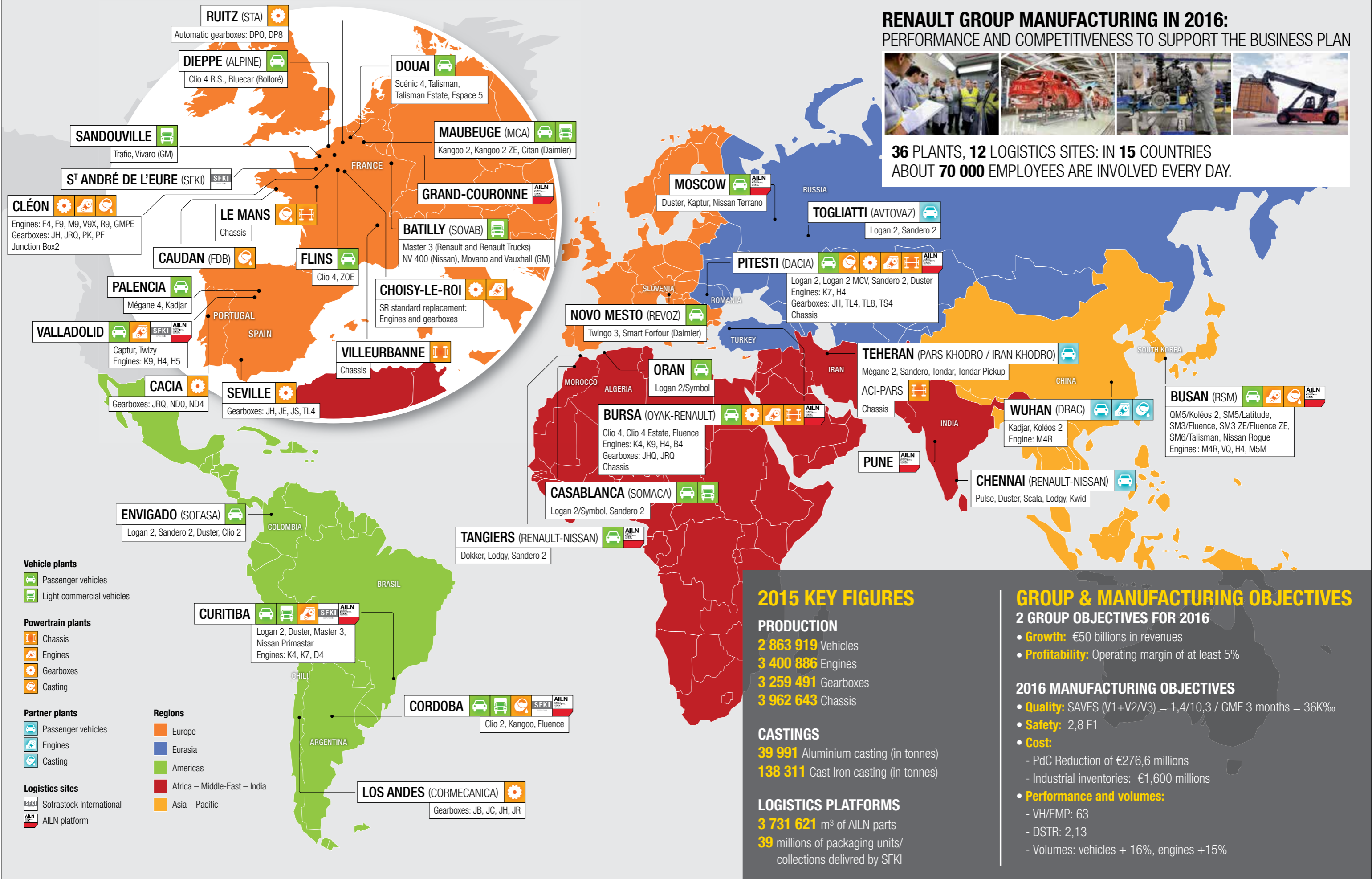


RENAULT GROUP MANUFACTURING IN 2016: PERFORMANCE AND COMPETITIVENESS TO SUPPORT THE BUSINESS PLAN



36 PLANTS, 12 LOGISTICS SITES: IN 15 COUNTRIES
ABOUT **70 000** EMPLOYEES ARE INVOLVED EVERY DAY.



2015 KEY FIGURES

PRODUCTION

2 863 919 Vehicles
3 400 886 Engines
3 259 491 Gearboxes
3 962 643 Chassis

CASTINGS

39 991 Aluminium casting (in tonnes)
138 311 Cast Iron casting (in tonnes)

LOGISTICS PLATFORMS

3 731 621 m³ of AILN parts
39 millions of packaging units/
collections delivered by SFKI

GROUP & MANUFACTURING OBJECTIVES

2 GROUP OBJECTIVES FOR 2016

- Growth:** €50 billions in revenues
- Profitability:** Operating margin of at least 5%

2016 MANUFACTURING OBJECTIVES

- Quality:** SAVES (V1+V2/V3) = 1,4/10,3 / GMF 3 months = 36K%
- Safety:** 2,8 F1
- Cost:**
 - PdC Reduction of €276,6 millions
 - Industrial inventories: €1,600 millions
- Performance and volumes:**
 - VH/EMP: 63
 - DSTR: 2,13
 - Volumes: vehicles + 16%, engines +15%

